

BRICK FABRICATION LIMITED

Prefabricated Building Solutions

Prefabricated Chimney Products



Prefabricated Chimney Range

GRP Developer Range

The GRP Developer stack is completely manufactured in Glass Reinforced Plastic made to imitate brick, render and lead flashing materials. They are available in a variety of sizes, finishing and detail. The features and benefits of the GRP Developer stack are:

Features

Standard sizes and styles

Glass Reinforced Plastic

Optional brick types and finishes, corbel detail, caps and pots

Completely sealed

Chimney collar is lead coloured

Can be used for live class 2 flue (gas appliances)

Benefits

Low cost

Quick availability

Lightweight - Crane not required for lifting & roof trusses do not require reinforcement

Easy to handle

Simple lead flashing gives significant cost and time saving over traditional lead work

Quick and easy to install



Brick Clad Range

2

The Brick Clad stack is a GRP core, clad in real brick or stone. These provide more options and flexibility than the Developer range. The Glass Reinforced Plastic core allows many options for brick or stone cladding, render preparation, corbel detailing, optional capping or flaunching and a wide selection of pots. The features and benefits of the Brick Clad stack are:

Features

Clad in any real brick, stone or render prepared

Bespoke corbel and brick detailing

Cap, flaunching and wide selection of pot options

Can be used for live class 1 or 2 chimney systems

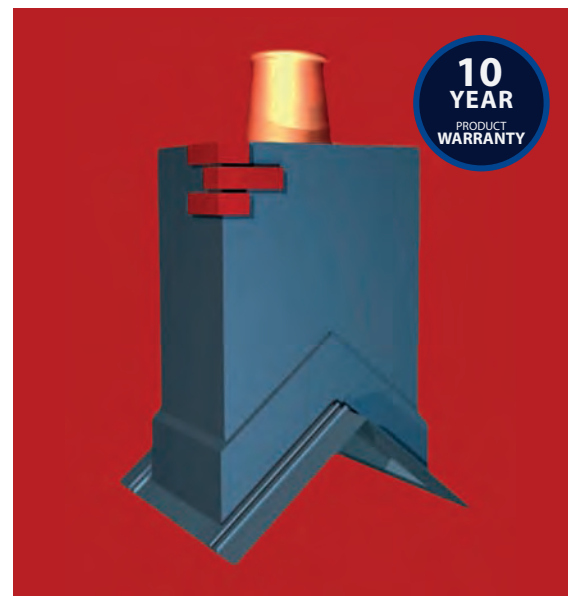
Benefits

Can be matched exactly to any brick or stone detail

Can be matched exactly to mortar or render on site

Simple lead flashing gives significant cost and time saving over traditional lead work

Quick and easy to install



The Developer and Brick Clad ranges are delivered as a single and completely sealed product and do not require lead flashing. If lead dressing is required for cosmetic purposes, lead flashing can be fitted and sealed on site.

Prefabricated Chimney Range

Bespoke Chimney Stacks

The bespoke chimney stack option offers a huge range options and solutions for any difficult installation or just for those looking for something different. These stacks are made to any size for any roof position and finished to almost any style. At Brick Fabrication we provide a full design service using the latest CAD technology to communicate design solutions to suit your requirements. Features and benefits of choosing a bespoke service:

Features

Wide range of options and finishes available

Large chimneys are reinforced with steel frames

Completely prefabricated timber core encased in GRP

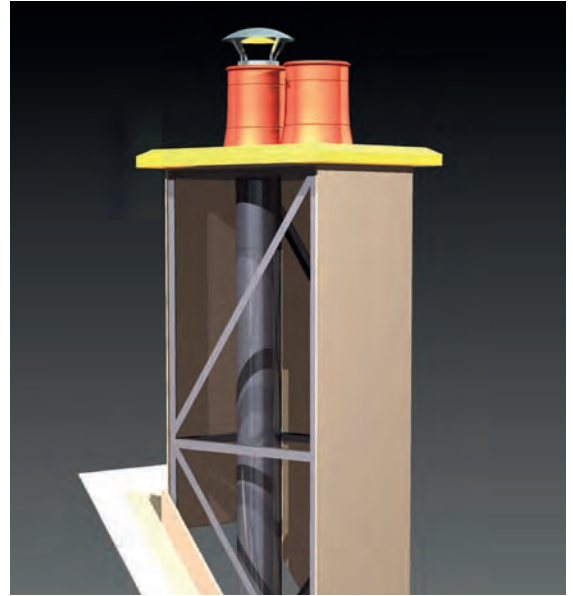
Benefits

Made to specification

Fully sealed construction

Design team are available to discuss requirements and provide innovative solutions

Latest CAD software for effective and concise communication



Warranty

The GRP Developer and Brick Clad ranges are supplied with a 10 year product warranty against water ingress. Our warranty will only be valid to our products that are installed following the lifting and fitting instructions. Please refer to the full Lifting and Fitting Instructions booklet which is available as a separate document.



3

Services

At Brick Fabrication we offer a full estimating and quantities investigation from site drawings and a site call off service for products as you require them. Visit our web site or contact us for AutoCAD drawings of our products to specify on your project drawings.

For our brick clad or bespoke products we can collect bricks from site if required. All Brick Fabrication chimneys are supplied to site with lifting and fitting instructions and lifting eyes where necessary or requested.

To request a quote, please use the appropriate chimney specification form or online at:

www.brickfabrication.co.uk



www.brickfabrication.co.uk

GRP Developer Range

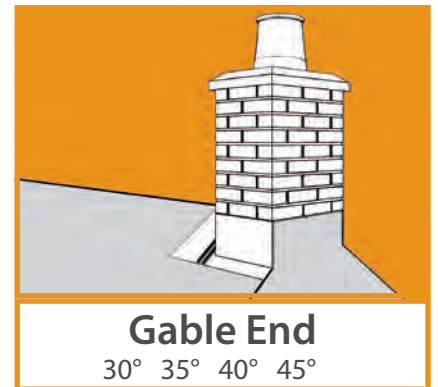
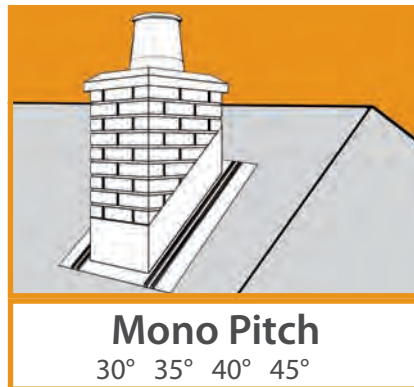
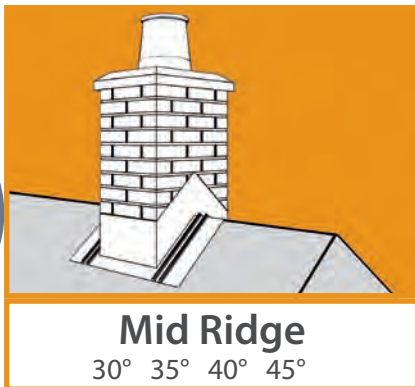


Developer Range Stack Sizes

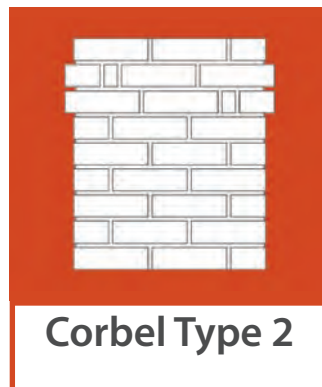
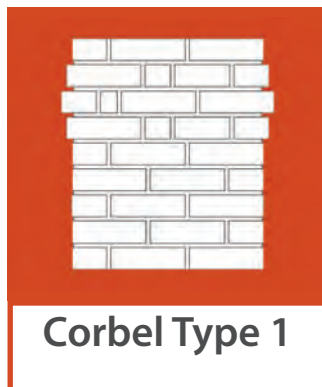
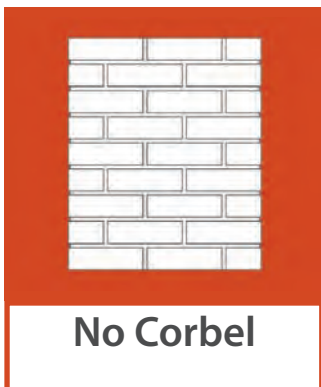


Shown as 40° mid ridge with no corbel, standard capping and 300mm pot for illustrative purposes.

Roof Position and Pitch Options

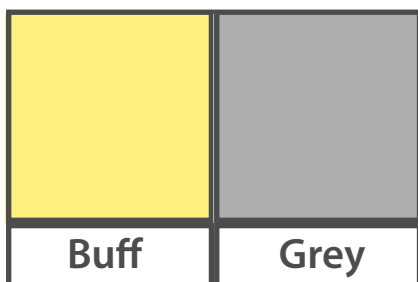


Corbel Detail Options



GRP Developer Range

Brick Texture, Mortar and Colour Options



Brick textures, colours and mortar colours shown are the standard available options. Colour matching to existing brick and mortar is also possible. Please contact us for price and availability if you require colour matching.

Rendered stacks can also be colour matched. Please specify RAL colour codes if possible.

Capping and Pot Options

Standard and flaunched effect caps are both available in buff or grey coloured GRP.

The Cader Idris, Scafell Pikes and Snowdon are single pot stacks. The Ben Nevis is a twin pot stack.

300mm and 450mm high pots are available in terracotta or buff coloured GRP.



Lead Flashing

The Developer Range Stacks are completely sealed and can be fitted on site with a simple lead flashing strip saving time and cost and matching the chimney base. Additionally for aesthetic purposes, the chimney can be traditionally lead flashed on site.

Brick Clad Range

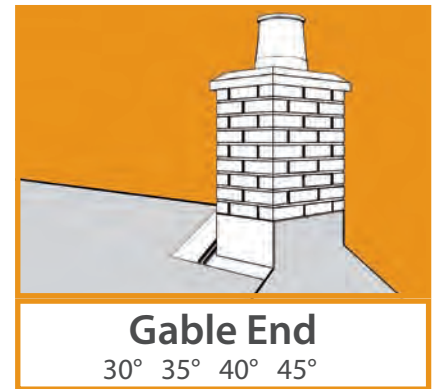
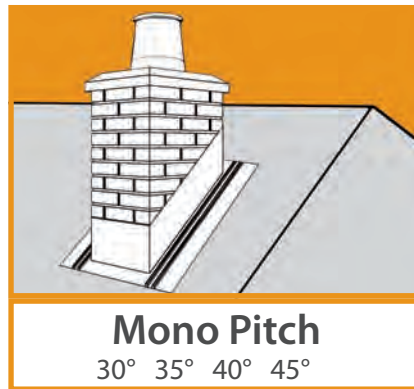
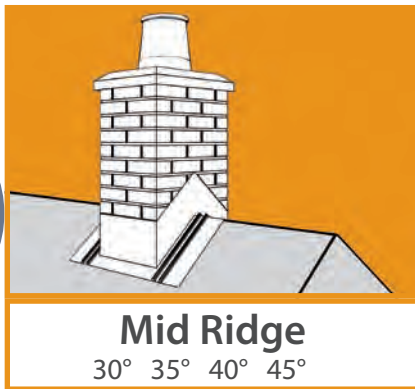


Brick Clad GRP Core Stack Sizes

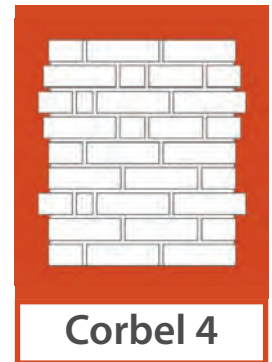
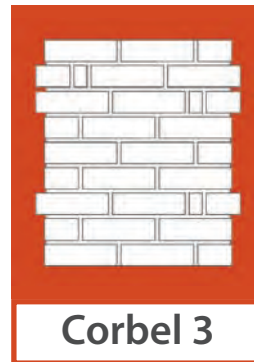
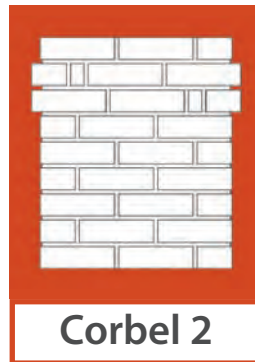
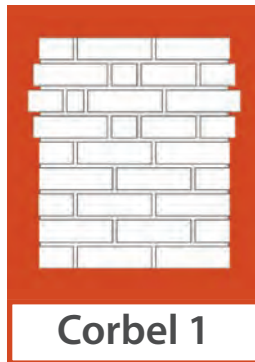
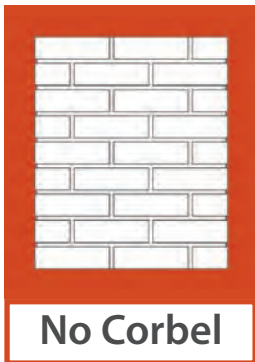


Shown as 40° mid ridge pre-clad core without cap or pot for illustrative purposes.

Roof Position and Pitch Options



Corbel Detail Options



The Brick Clad range can be clad with almost any brick, stone or be prepared for rendering on site. Brick and stone can be collected from site to ensure a perfect match. Standard corbel detail options are shown above, alternatively corbel detailing can be made to your requirements.

Brick Clad Range

Capping and Pot Options



Flaunching and Standard caps are available in a buff or grey colour and are also available in lightweight Glass Reinforced Plastic (GRP) as standard or in a Glass Reinforced Concrete (GRC) option. Flaunching on site allows for perfect mortar colour matching if preferred.

Pots are currently available in 300mm and 450mm standard heights.

Each are available in buff or terracotta colours and also available in lightweight GRP as standard or as a clay option.



A large selection of Hanson Red Bank clay pots are also available.

Lifting

Due to the extra weight of brick clad or rendered stacks and the optional use of GRC and clay pots, we provide a lifting method and supply lifting eyes with the delivered chimney. For the lifting and fitting of these chimneys please refer to the lifting and fitting instructions included in this brochure and also available as a separate document.

Lead Flashing

The Core Range Stacks are completely sealed and can be fitted on site with a simple lead flashing strip saving time and cost and matching the chimney base. Additionally for aesthetic purposes, the chimney can be traditionally lead flashed on site.

Live Class Chimney Options

For Live Class options please refer to the Live Class options section in this brochure.

Bespoke Chimneys

Bespoke Chimney Stacks

The Bespoke chimneys are manufactured using a GRP laminated timber core with real brick or stone slips or can be prepared for rendering on site. Corbel and brick/ stone detailing can be produced as required. Any stack size, shape, roof pitch and position can be prefabricated to your design and specification. Steel reinforced designs and alternative secure roof fixing methods provide many solutions for any complicated situations.

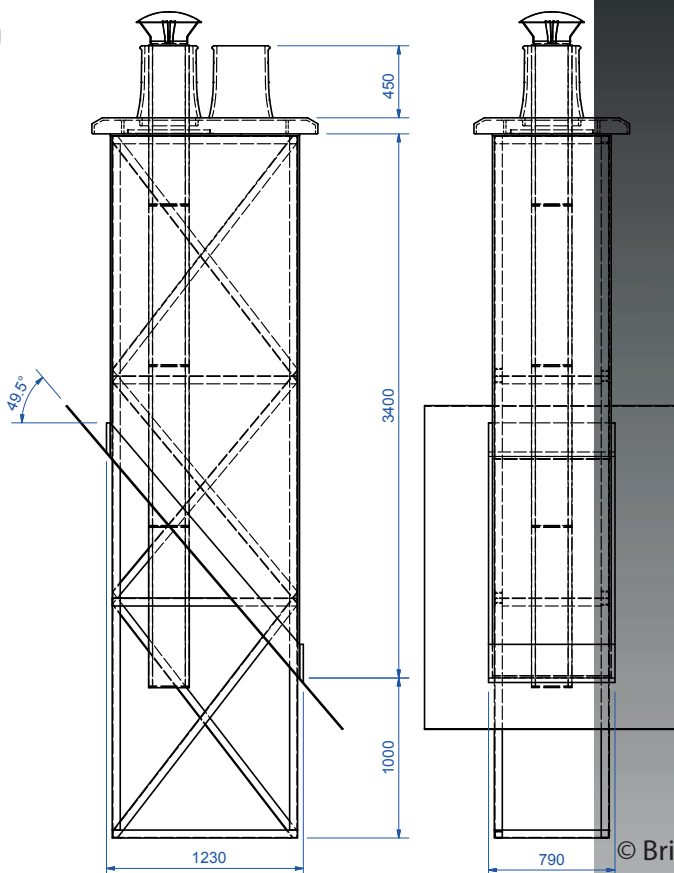
Using the latest in house *Computer Aided Design* technology we can model and simulate the chimney design for effective communication between the customer and production team to ensure a quality factory built product.

Our in house design team will happily discuss any designs with architects, engineers and specifiers.

Contact us for more information or to discuss a new project.

Featured Project:

Bespoke Live Class 1 Chimney with steel reinforcing frame for custom installation method.



© Brick Fabrication Limited 2009

Live Class Chimneys

Live Class Chimney Stacks

Live Class 1 and 2 options are available for the Brick Clad Range and Bespoke chimneys. Please be aware that size restrictions and options may be limited depending on flue size and types.

Live Class 1 Chimney For wood burning closed appliances only

Availability:

- Wye, Frome and Thames Brick Clad Range or Bespoke stacks
- Mid ridge and mono pitch roof positions only
- Can be finished in any brick, stone or render prepared
- Any standard corbel type or bespoke corbel detail
- GRC Vented Capping only
- 300mm high terracotta clay pot only
- Recommended (but optional) rain cap and storm collar
- Up to 203mm (8") twin wall flue system

Live Class 2 Chimney For gas appliances only

Availability:

- Any chimney from the Brick Clad Range or Bespoke stacks
- Mid ridge and mono pitch roof positions only
- Can be finished in any brick, stone or render prepared
- Any standard corbel type or bespoke corbel detail
- GRC Standard, Flaunching or Vented cap
- 300mm high terracotta clay pot only
- With Hanson Red Bank GC1 terracotta clay gas terminal
- Up to 152mm (6") twin wall flue system

Please contact us for further information, availability and options.



© Brick Fabrication Limited 2009

Frome shown with rain cap and ventilated GRC capping



© Brick Fabrication Limited 2009

Lifting and Fitting Instructions

A separate lifting and fitting instruction booklet is delivered with every chimney product and is also available separately and on our website.

Preparation

Before lifting and installing any chimney products ensure that:

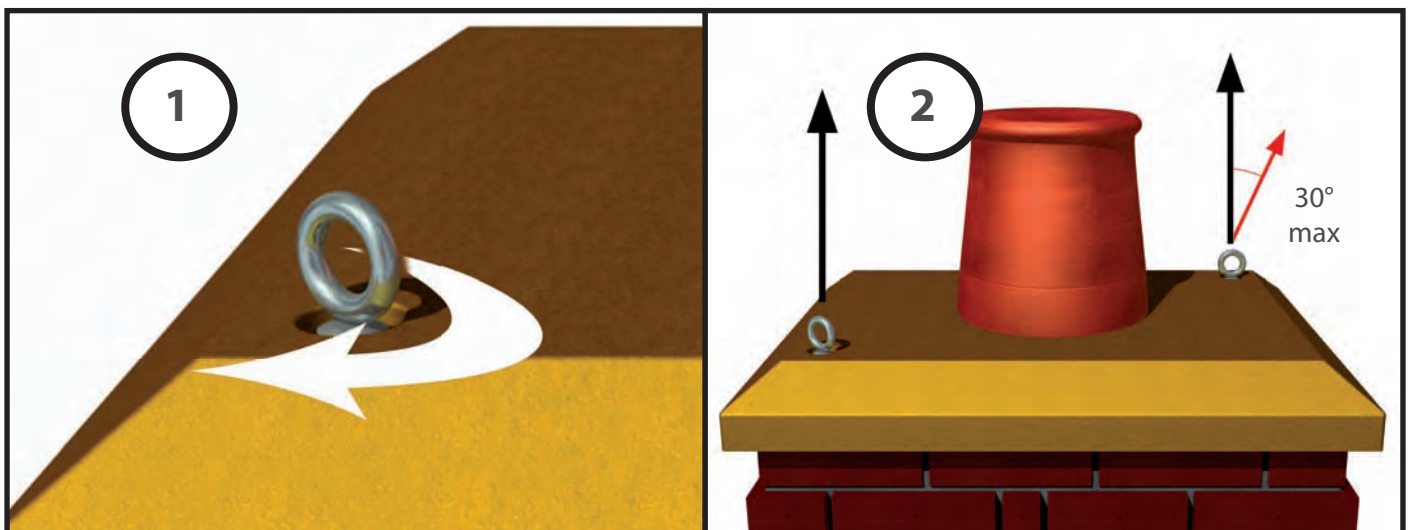
- The chimney weight has been checked and all lifting equipment is suitable and within safe working loads.
- Roof trusses are suitably reinforced if and where necessary to receive and support the chimney weight.
- Roof trusses, noggins or fixing surfaces to which the skirt can be fastened to have been suitably aligned.
- If the chimney is a live stack, the flue components are aligned and accessible to be joined together.
- If the chimney is for a gable end roof position, there are suitable anchor points to which the metal fixing strips can be secured to.
- The roof is felted prior to lifting and fitting with an additional 3 layers of felt under the chimney skirt.
- If the chimney is provided with lifting eyes, the lifting eyes are tightly screwed down and secure.
- If the chimney is a brick clad product, it will require pointing prior to lifting.
- If the chimney stack is render prepared only, it will require rendering prior to lifting.
- If the chimney is to be flaunching on site, this will need to be done prior to lifting.

Lifting Method for Brick Clad Chimneys and Chimneys Provided with Lifting Eyes

Lifting eyes are provided with brick clad chimneys, and chimneys that require such a lifting method. Secure lifting points are built into the chimney and these must only be used to lift the product.

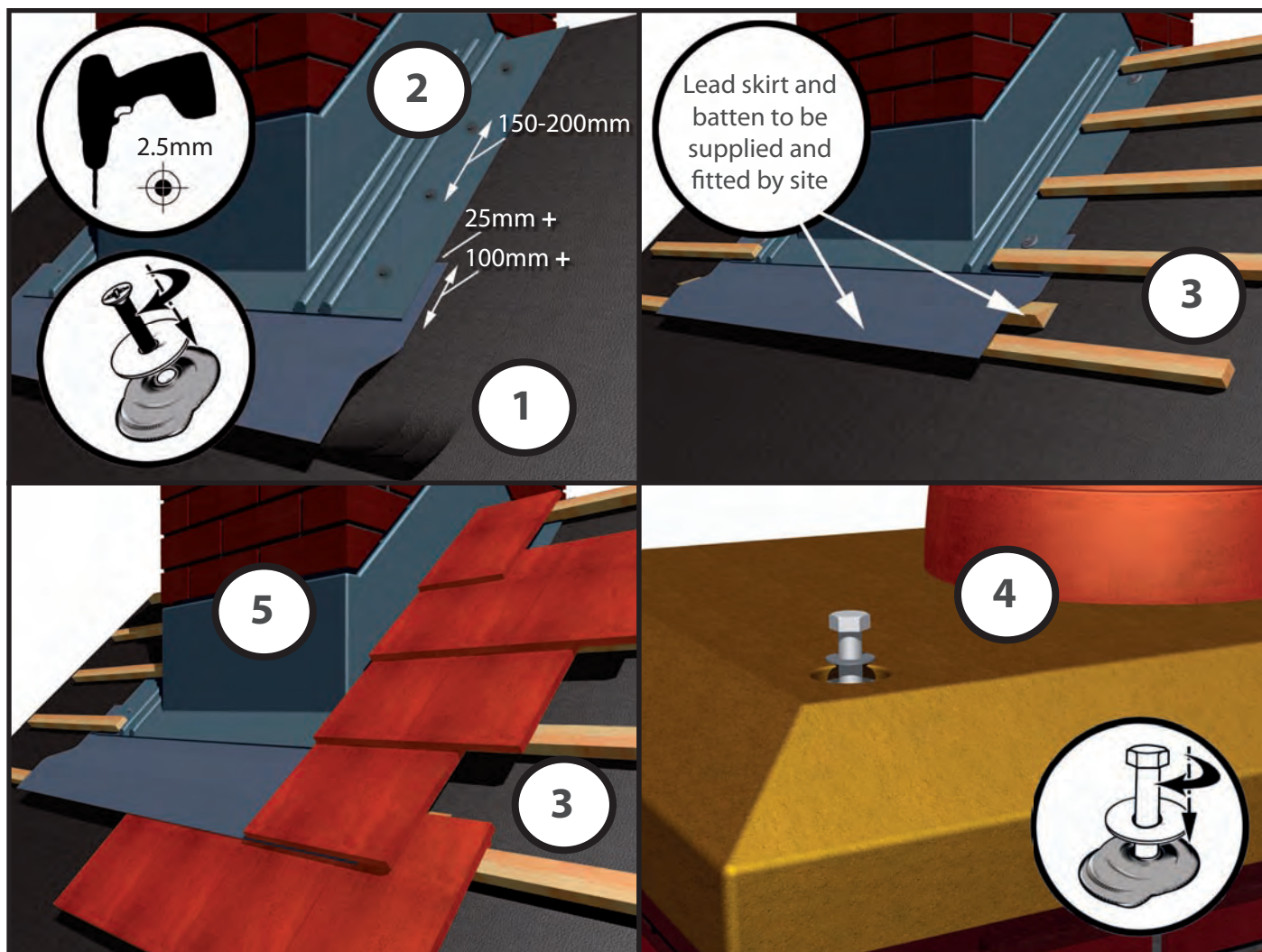
1. Before lifting, ensure the lifting eyes are tightened and secure and all necessary preparations as described are made before lifting.
2. Lifting should be kept equalised and the lifting angle vertical on each point, using a spreader beam. Uneven lifting or lifting at angles over 30° is unsafe.

When positioned on the roof, secure the chimney in place as described in the installation instructions BEFORE removing the lifting equipment.



Lifting and Fitting Instructions

Installation of GRP Developer Range and Brick Clad Chimneys



1. Roof must be felted with an extra 3 layers where the chimney is to be seated before lifting and positioning.
2. Pre-drill 2.5mm pilot holes through the fixing skirt outside of the rain channels as shown. Screw fixings with washers and sealant every 150-200mm apart using only the supplied fixing kit. A 305mm (12") lead strip must be fitted 100mm under the GRP skirt and extend a minimum of 25mm from each side of the GRP skirt. The screw fixings can be used to fasten the lead strip in place. DO NOT use nail fixings or any other fixing screws other than those supplied.
3. Roofing batten and roof tiles should be fitted as required and can be fitted over the fixing skirt up to the GRP rain channels. A chamfered batten must be used to support the lead skirt to lay up and over the tiles. Ensure a continuous downward fall for rain water to drain on to the tiles.
4. If the stack is supplied with lifting eyes, remove lifting eyes only after the chimney is secured to the roof. Squeeze sealant in to lifting eye holes and plug with the nylon bolts and washers provided. Remove any excess sealant.
5. Lead flashing can be applied for a traditional look. Generously apply sealant into the lead flashing channel before dressing and sealing the lead flashing over the tiles as normal.

BRICK FABRICATION LIMITED

Prefabricated Building Solutions

Gemini Works
Estate Road
Pontypool
NP4 6YW

Mulleys Farm
Little Bromley
Essex
CO11 2PL

Tel: 01495 75 95 55
Fax: 01495 75 98 74

Tel: 01206 39 35 35
Fax 05600 49 31 16

www.brickfabrication.co.uk

Brick Fabrication Limited are committed to continuous product development and reserve the right to alter specifications without prior notification. No part of this publication may be reproduced or transmitted by any means without prior written permission from Brick Fabrication Limited.

All rights reserved. Copyright Brick Fabrication Limited 2009.



*Prefabricated Chimney Products
Issue 2 - May 2009*