

# Lifting and Fitting Instructions

## Preparation

Before lifting and installing any chimney products ensure that:

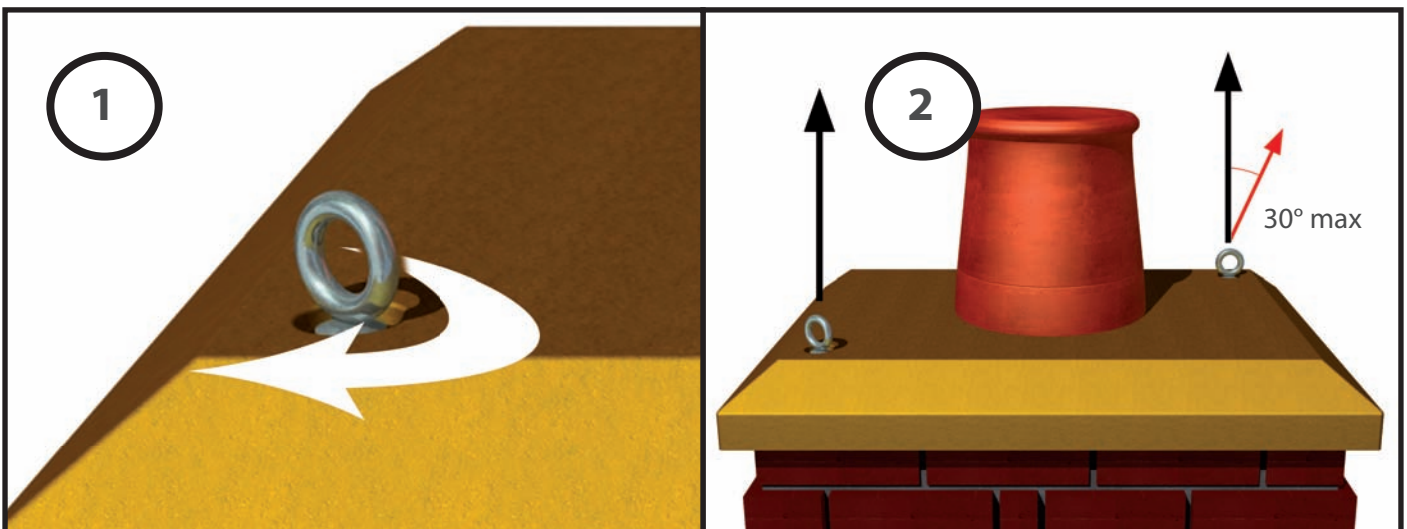
- The chimney weight has been checked and all lifting equipment is suitable and within safe working loads.
- Roof trusses are suitably reinforced if and where necessary to receive and support the chimney weight.
- Roof trusses have suitably aligned and fixed noggins or fixing surfaces to which the skirt can be fastened to.
- If the chimney is a live stack, the flue components are aligned and accessible to be joined together.
- If the chimney is for a gable end roof position, there are suitable anchor points to which the metal fixing strips can be secured to.
- The roof is felted prior to lifting and fitting with an additional 3 layers of felt under the chimney skirt.
- If the chimney is provided with lifting eyes, the lifting eyes are tightly screwed down and secure.
- If the chimney is a brick clad product, it will require pointing prior to lifting.
- If the chimney stack is render prepared only, it will require rendering prior to lifting.
- If the chimney is to be launched on site, this will need to be done prior to lifting.

## Lifting Method for Brick Clad Chimneys and Chimneys Provided with Lifting Eyes

Lifting eyes are provided with brick clad chimneys, and chimneys that require such a lifting method. Secure lifting points are built into the chimney and these must only be used to lift the product.

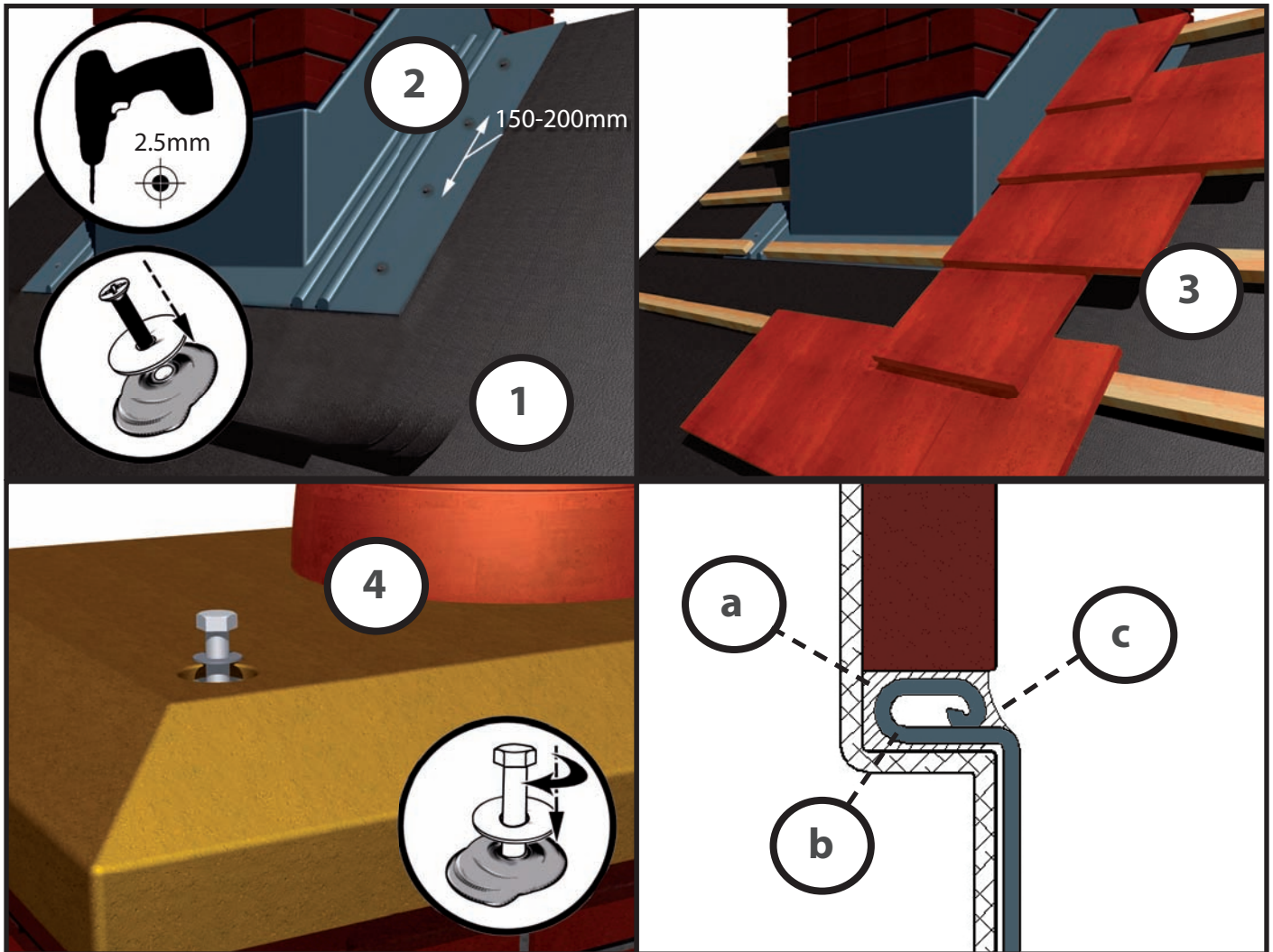
1. Before lifting, ensure the lifting eyes are tightened and secure and all necessary preparations as described are made before lifting.
2. Lifting should be kept equalised and the lifting angle vertical on each point, using a spreader beam. Uneven lifting or lifting at angles over 30° is unsafe.

When positioned on the roof, secure the chimney in place as described in the installation instructions BEFORE removing the lifting equipment.



# Lifting and Fitting Instructions

## Installation of GRP Developer Range and Brick Clad Chimneys



1. Roof must be felted with an extra 3 layers where the chimney is to be seated before lifting and positioning.
2. Pre-drill 2.5mm pilot holes through the fixing skirt outside of the rain channels as shown. Screw fixings with washers and sealant every 150-200mm apart using only the supplied fixing kit. DO NOT use nail fixings or any other fixing screws other than those supplied.
3. Roofing batten and roof tiles should be fitted as required and can be fitted over the fixing skirt up to the GRP rain channels.
4. If the stack is supplied with lifting eyes, remove lifting eyes only after the chimney is secured to the roof. Squeeze sealant in to lifting eye holes and plug with the nylon bolts and washers provided. Remove any excess sealant.
5. Using sealant (a) , the lead flashing channel MUST be sealed all the way around the chimney before fitting the lead as shown (b). The lead flashing should be fitted according to the lead sheet association then sealed all the way around again with sealant (c).